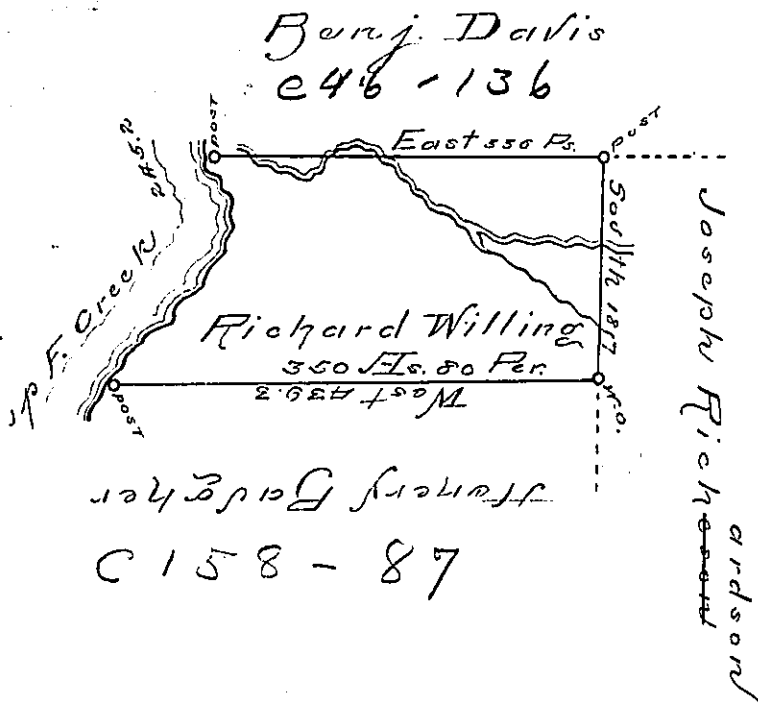


River Courses.

N.	32 1/2°	E.	113.2
N.	72 1/2°	E.	24
N.	63 1/2°	E.	22
N.	35°	E.	28
N.	5 1/2°	E.	20
N.	27	W.	32
N.	47	W.	6
		Ps.	245.2



Situation and adjoining the East Side of French Creek in Allegheny County containing 350 Acres 80 Perches and allowance of Six P. Cent & c.

Surveyed the 12th Day of November 1794 In Pursuance of a Warrant Dated 13th April 1792

To Daniel Brodhead Esq^r }
Surveyor General } Wm. Power Esq^r

IN TESTIMONY that the above is a copy of the original remaining on file in the Department of Internal Affairs of Pennsylvania, made conformably to an Act of Assembly approved the 16th day of February, 1833, I have hereunto set my Hand and caused the Seal of said Department to be affixed at Harrisburg, this

— thirtieth — day of — March — 1894

Thos. J. Stewart
Secretary of Internal Affairs.